



HP ProBook / EliteBook AMD G8 Series

SMALL IS THE NEW BIG



Business Notebook Portfolio

INNOVATIVE DESIGNS & PREMIUM EXPERIENCES

SUPERB SECURITY & MANAGEABILITY

PROVEN RELIABILITY AFFORDABLY PRICED

HP 200

Affordable business notebooks with essential features

14"/15" Intel/AMD



ProBook 6x0 G8 / 635 G7

Legacy support plus flexibility and security

13"/14"/15" Intel/AMD



EliteBook 8x0 G8 / 8x5 G7

Security, manageability, and performance in an ultrathin design with lift-anywhere front edge

13"/14"/15" Intel/AMD



EliteBook 1000 G8

Thinnest and lightest designs with lift-anywhere front edge, versatile form factors, and productivity powerhouses for work and life

13"/14" Intel



ProBook 4x0 G8 / 4x5 G7

Power, style and value - just what your growing business needs

13"/14"/15" Intel/AMD



13" x360 830 Intel

Elite Dragonfly G2



Business Notebook Portfolio

INNOVATIVE DESIGNS & PREMIUM EXPERIENCES

SUPERB SECURITY & MANAGEABILITY

PROVEN RELIABILITY AFFORDABLY PRICED

HP 200

Affordable business notebooks with essential features

14"/15" Intel/AMD



ProBook 6x0 / 635 G8

Legacy support plus flexibility and security

13"/14"/15" Intel/AMD



EliteBook 8x0 / 8x5 G8

Security, manageability, and performance in an ultrathin design with lift-anywhere front edge

13"/14"/15" Intel/AMD



EliteBook 1000 G8

Thinnest and lightest designs with lift-anywhere front edge, versatile form factors, and productivity powerhouses for work and life

13"/14" Intel



ProBook 4x0 / 4x5 G8

Power, style and value - just what your growing business needs

13"/14"/15" Intel/AMD



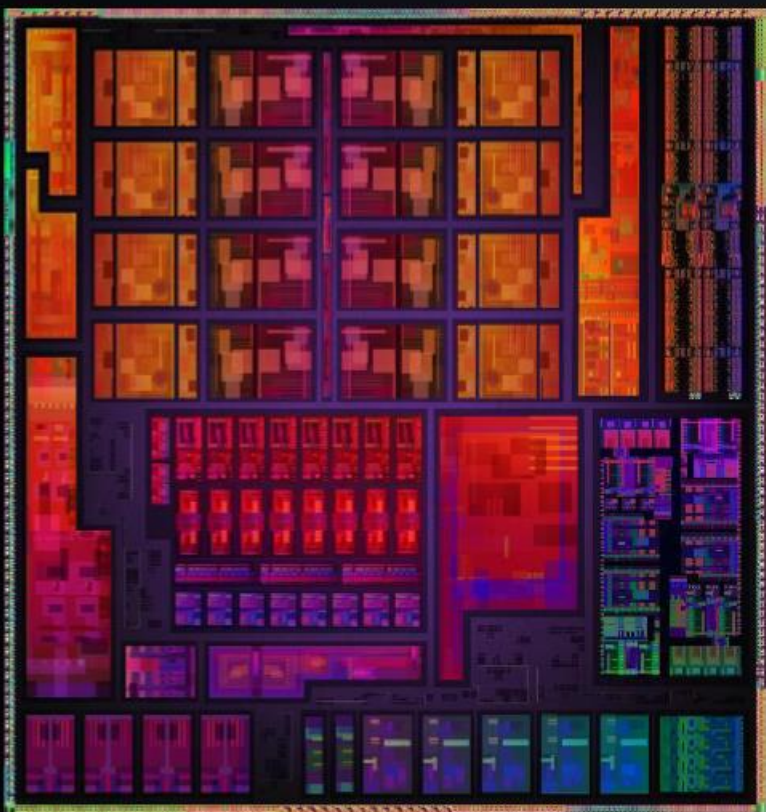
13" x360 830 Intel

Elite Dragonfly G2



AMD RYZEN™ 5000 SERIES MOBILE PROCESSORS

THE FASTEST MOBILE PROCESSORS YOU CAN GET



UNMATCHED PERFORMANCE

Only AMD Ryzen Mobile processors offer up to 8 cores for thin and light laptops

LONGER BATTERY

Relentless core, uncore, and platform optimization extend runtime by up to 2.0 hours

HIGHER FREQUENCIES

Refined AMD design methodologies raise CPU and GPU frequencies gen-on-gen

SMT ENABLED

Ryzen 5000 Series now has SMT enabled across the stack

CPPC ENABLED

Faster frequency ramping and more precise power management raise the experience

Business Notebook Portfolio

INNOVATIVE DESIGNS & PREMIUM EXPERIENCES

SUPERB SECURITY & MANAGEABILITY

PROVEN RELIABILITY AFFORDABLY PRICED

HP 200

Affordable business notebooks with essential features

14"/15" Intel/AMD



ProBook 6x0 / 635 G8

Legacy support plus flexibility and security

13"/14"/15" Intel/AMD



ProBook 4x0 / 4x5 G8

Power, style and value - just what your growing business needs

13"/14"/15" Intel/AMD



EliteBook 8x0 / 8x5 G8

Security, manageability, and performance in an ultrathin design with lift-anywhere front edge

13"/14"/15" Intel/AMD



13" x360 830 Intel



EliteBook 1000 G8

Thinnest and lightest designs with lift-anywhere front edge, versatile form factors, and productivity powerhouses for work and life

13"/14" Intel



Elite Dragonfly G2





2021 HP PROBOOK G8

BRINGING MODERN TO EVERYONE

SMALL FOOTPRINT

*Enhanced Screen to Body Ratio
Slim aluminum designs*

GREAT VIEWING

*Narrow bezels
higher performance screens*

PRODUCTIVE & RESPONSIVE

*2021 Generation processors
Wi-Fi 6 connectivity¹, Modern Standby
USB-C[®] docking,*

EASY WITH LAYERS OF SECURITY

*SureView, SureStart, Privacy Camera
Multi-factor authentication*



ProBook 445 / 455 G8

SMALLER FOOTPRINT, REFRESHED DESIGN



ProBook x360 435 G8

No chassis change from G7



Aero?

“Aero” signifies **lightness** combined with **strength** and **speed** with an appeal that is both elegant and practical.



World's lightest AMD-based business notebook

HP ProBook 635 Aero G7

Combining the lightness of magnesium and the strength and sleekness of aluminum, this sub **1 Kg laptop** is the ideal platform for the modern worker desiring mobility - at home, at the office or anywhere.



World's lightest AMD-based business notebook

HP ProBook 635 Aero G8

Combining the lightness of magnesium and the strength and sleekness of aluminum, this sub **1 Kg laptop** is the ideal platform for the modern worker desiring mobility - at home, at the office or anywhere.



POWER ON THE INSIDE

AMD Ryzen™ 5000

Powered with the latest AMD processors, optional Pro APUs, integrated latest AMD Radeon™ technology

up to
1TB Storage

up to
32GB
upgradeable dual channel memory

High Quality Keyboard

Enjoy the consistent feel and extremely quiet typing experience



Anti-Glare Screen Options

HP Sure View Reflect 1000nits
1W 400nit panel
250nit panel

Full Featured Ports

USB-C® 3.1 Gen2
(2) USB 3.1 Gen1
HDMI 2.0
Headphone
Nano Security Lock Slot

Windows Hello

Integrated IR sensors allow fast login through a hybrid IR/Webcam

Modern Standby

To get you back to work in seconds



Business Notebook Portfolio

INNOVATIVE DESIGNS & PREMIUM EXPERIENCES

SUPERB SECURITY & MANAGEABILITY

PROVEN RELIABILITY AFFORDABLY PRICED

HP 200

Affordable business notebooks with essential features

14"/15" Intel/AMD



ProBook 6x0 / 635 G8

Legacy support plus flexibility and security

13"/14"/15" Intel/AMD



ProBook 4x0 / 4x5 G8

Power, style and value - just what your growing business needs

13"/14"/15" Intel/AMD



EliteBook 8x0 / 8x5 G8

Security, manageability, and performance in an ultrathin design with lift-anywhere front edge

13"/14"/15" Intel/AMD



13" x360 830 Intel



EliteBook 1000 G8

Thinnest and lightest designs with lift-anywhere front edge, versatile form factors, and productivity powerhouses for work and life

13"/14" Intel



Elite Dragonfly G2



HP ELITE IS THE CUTTING EDGE OF ADAPTABILITY



835 G8



855 G8

Led by the highly distinguished and refined features of the HP EliteBook.



845 G8



MAR '21

HP ELITEBOOK 805 G8 SERIES

A NEW DESIGN FOCUSED ON AN ENHANCED VISUAL EXPERIENCE FOR ALL-DAY PRODUCTIVITY AND COMFORT



A SMARTER PC

AI-Based noise reduction and audio enhancements with HP Sound Calibration⁹ and HP Dynamic Audio¹⁰, which tunes output to speech, music and movies all while suppressing background noise.



DESIGNED FOR HOW YOU WORK

The HP EliteBook 805 is built for how you work today. This easy to carry ultralight and thin business PC comes with an **85% screen-to-body ratio** and a quiet and comfortable keyboard to work on.



WORK WITH PEACE OF MIND

Security features from HP work together to create an always-on, always-acting, resilient defense. From the BIOS to the browser, above and below the OS, these constantly evolving solutions help protect your PC from threats.



CAPTURE EVERY IDEA

Do your best work when and where you like. Stay connected with optional 4G LTE wireless³⁶, long battery life, a powerful, highly secure, and reliable **AMD Ryzen™ 5000 Series Mobile Processors with PRO technologies⁴¹** with AMD Radeon™ Graphics and AMD Memory Guard.



Ultrathin: >17.95 mm
Ultralight: >1.30 kg



AMD Ryzen™ 5000 Series Mobile Processors with PRO technologies⁴¹



Long battery life + HP Fast Charge⁵¹
Recharge to 50% in 30 minutes



HP Sure View Reflect³¹



Wi-Fi 6 (802.11ax)³⁷
and 4G LTE wireless³⁶



Privacy Camera
Touch Fingerprint Sensor



HP ELITEBOOK 800 SERIES G8 vs HP ELITEBOOK 805 SERIES G8



FEATURES	800 SERIES G8	805 SERIES G8
INTEL® CPU	✓	-
AMD® CPU	-	✓
THUNDERBOLT™	✓	-
AMD® MEMORY GUARD	-	✓
DISCRETE GRAPHICS (850 ONLY)	✓	-
5G	✓	-



SUSTAINABLE THROUGH AND THROUGH



HP IS COMMITTED TO DELIVERING THE WORLD'S MOST SUSTAINABLE PC PORTFOLIO⁹²



HP EliteBook 805 Series G8

BEFORE USE	Recycled aluminium cover (Cover A, C, & D)	✓
	90% recycled magnesium cover	—
	Keycaps made from 50% post-consumer recycled plastics (DVDs)	✓
	Speakerbox with ocean-bound plastic	✓
	100% sustainably sourced or recycled packaging	✓
	Bulk packaging	✓
DURING USE	EPEAT Certification	
	Energy Star Rated	✓
	TCO Certified	✓
	Undergoes 19 MIL-STD 810 tested for durability	✓
	Sanitizable	✓
AFTER USE	HP Planet Partners	✓
	HP Device Recovery	✓

HP COMMERCIAL NOTEBOOKS 2021 PORTFOLIO OVERVIEW



HP 200/205
14" / 15"
Intel/AMD

PROBOOK 400/405
13" / 13" x360 / 14" / 15"
Intel/AMD

PROBOOK 600/605
13" / 14" / 15"
Intel/AMD

ELITEBOOK 800/805
13" / 13" x360 / 14" / 15"
Intel/AMD

ELITEBOOK 1000*
13" / 14"
Intel

SIMPLE EFFICIENCY

Affordable business notebooks with essential features

EVERYDAY PRODUCTIVITY

Power, style and value - just what your growing business needs

Legacy support plus flexibility and security

MISSION CRITICAL

Security, manageability, and performance in an ultrathin design with lift-anywhere front edge

SOPHISTICATED IMAGE

Thinnest and lightest designs with lift-anywhere front edge, versatile form factors, and productivity powerhouses for work and life

INNOVATIVE
DESIGNS & PREMIUM
EXPERIENCES

SUPERB SECURITY & MANAGEABILITY

PROVEN RELIABILITY AFFORDABLY PRICED

*Includes Dragonfly, Folio & X2

HP Confidential. For use by HP or Partner with Customers under HP CDA only.
© 2020 HP Development Company, L.P. The information contained herein is subject to change without notice.



